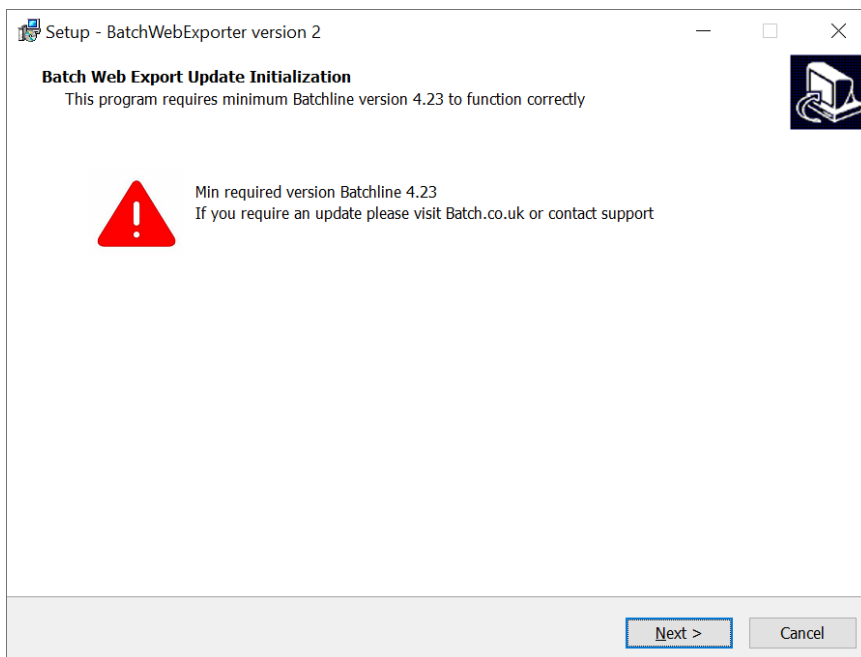


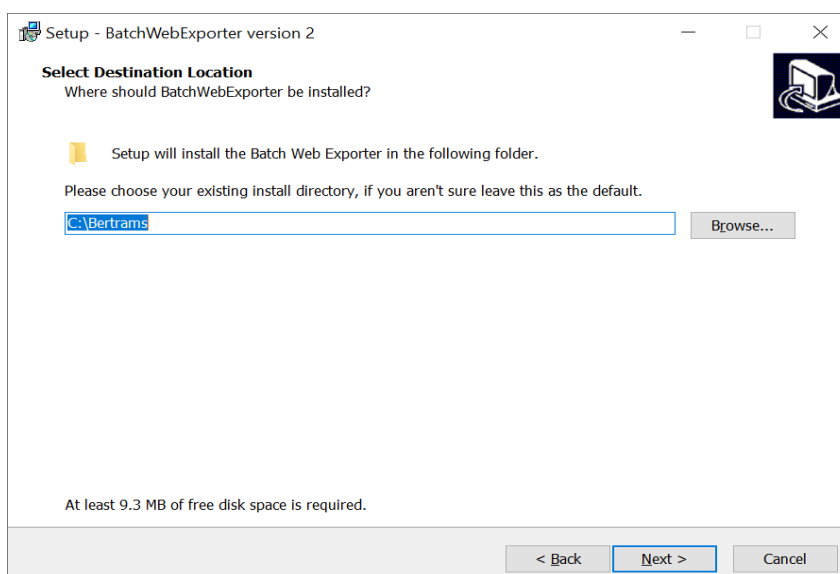
Batch Web Exporter Installation and User Guide

Installation:

- Download the installer from BatchOne
- If an old version of the exporter is running anywhere at your site shut it down
- Find the installer on your machine (probably in 'Downloads' folder) it's called 'BatchWebExporterInstaller'
- Run the installer (double click the downloaded file)
- Windows user account control will pop up asking if it's ok for the installer to make changes to your computer. Click 'Yes'
- You should see the screen below



- If you have at least Batchline v4.23 then you can click 'Next'
- You should then see this screen

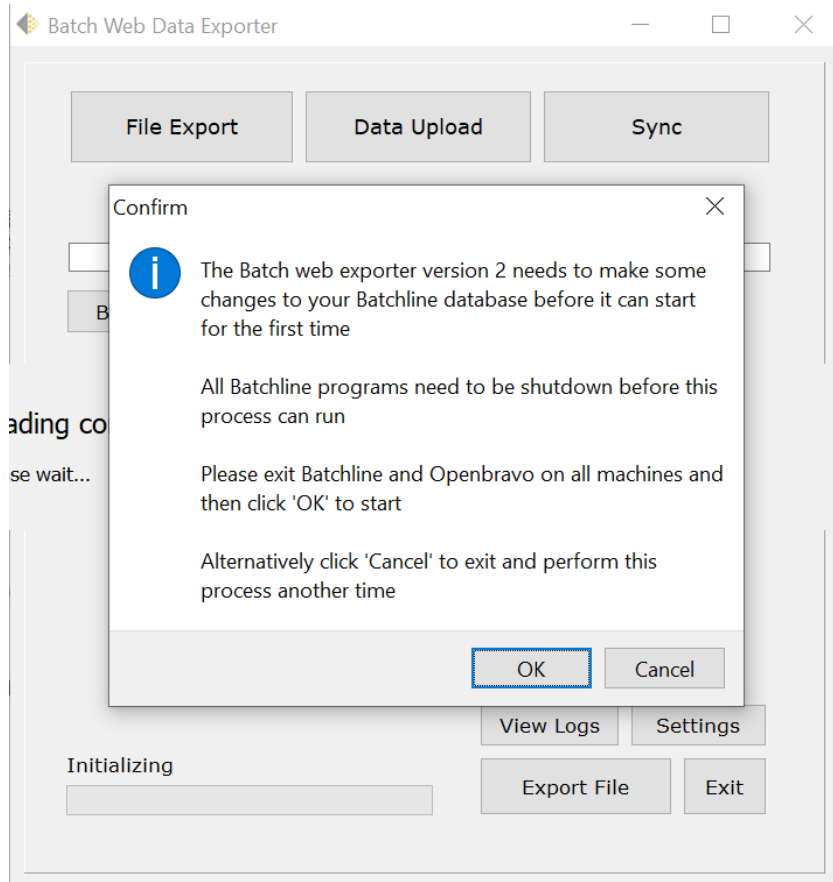


- Either leave the location as the default and click next, or chose your Batchline install directory if it is not c:\Bertrams (it is c:\Bertrams for for 99% of users)
- Click through the next two screens and then when install is complete click finish.

Running v2 for the first time:

When version 2 of the exporter runs for the first time it will need to make changes to your Batchline database. In order for this to happen you **MUST** quit all Batchline related programs running at your site. If you do not the upgrade will fail.

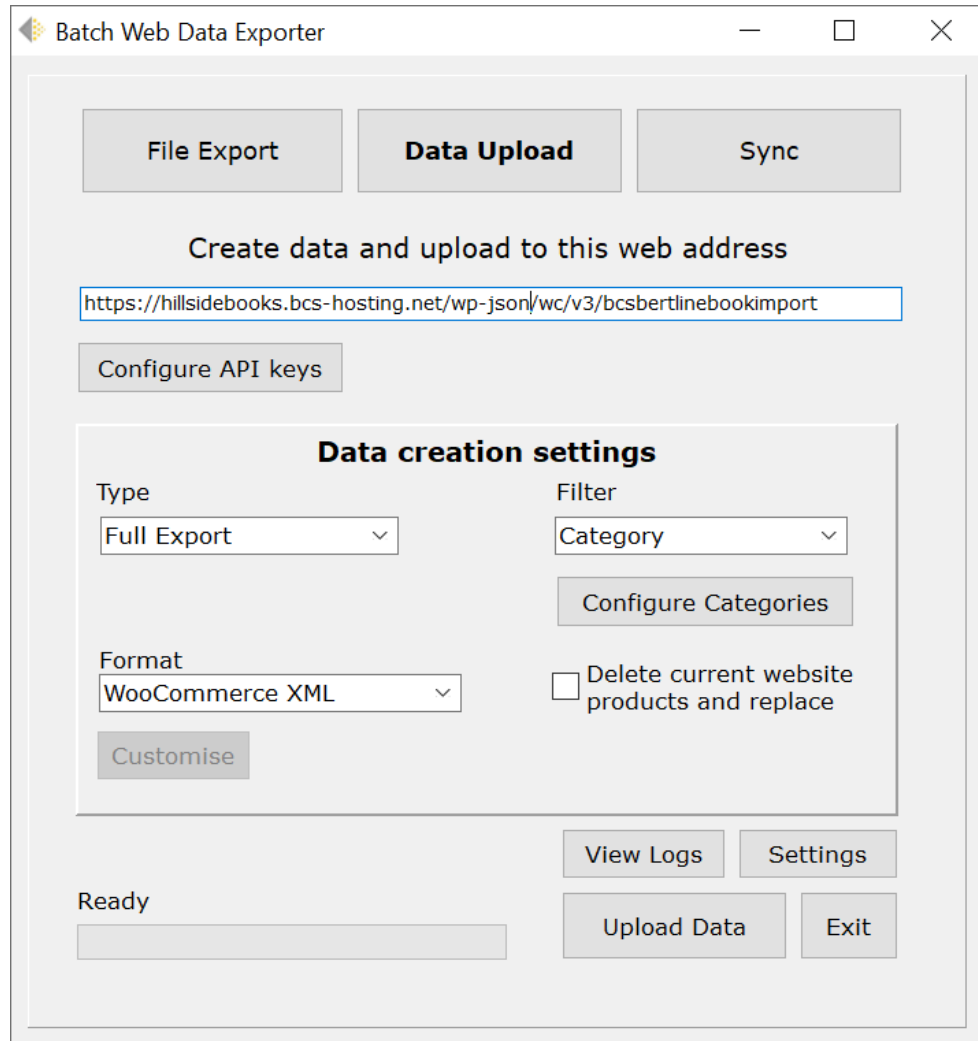
On first start you will see this:



- Exit Batchline on ALL shop computers
- Exit Openbravo on ALL shop computers
- Click 'OK'
- If everything has worked you won't see any error messages and the exporter should be ready to use
- If there are still programs running connected to the Batchline database the exporter should tell you and also tell you which PC it is on. You will then have a chance to exit these programs and continue the upgrade process.

Basic Web Exporter Use:

This basic guide assumes that you want to select stock to go to your website by shop category (i.e titles in some or all of your shop categories will be uploaded - you will select which ones) and that you use WooCommerce and that you have the BCS WooCommerce Plugin installed on your WooCommerce site.



This is the exporter screen. It looks like this in **File Export** and **Data Upload** modes (buttons across the top).

Both of these modes get title data from your shop in exactly the same way.

File Export mode saves this data to a file on your PC

Data Upload mode uploads this data to the internet

File Export mode and **Data Upload** mode both perform a single export of data

Sync mode runs continuously and uploads changes made to your stock to your website in real time

Process:

The basic principle we will use in this guide is that you will perform a **Full Export** of your stock to your website. This will upload all of Batchlines 'in stock' titles in selected categories to your website.

After this is complete you will run **Sync** on a daily basis to add new titles to the website as they come in as well as to keep prices, availability and stock quantities up to date on other products.

Configuring Batchline to work with BCS WooCommerce Plugin:

Assuming you have purchased the plugin and you have it installed on your WooCommerce web site.

Goto the admin backend of your WooCommerce website.

On the left find:

WooCommerce

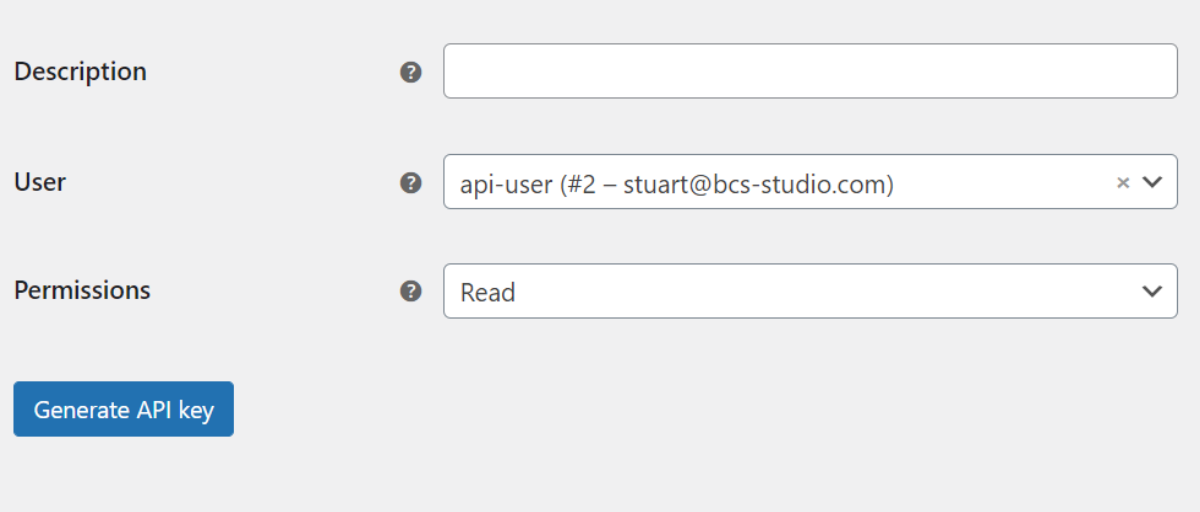
->Settings

At the top on the right there should be an 'Advanced' button - click this

Find the small link towards the top of the page that says 'Rest API' - click this

Click the 'Add Key' button

You should see something like this:



The screenshot shows a form for generating an API key. It has three rows of input fields, each with a question mark icon to its left. The first row is labeled 'Description' and has an empty text input field. The second row is labeled 'User' and has a dropdown menu with the selected option 'api-user (#2 – stuart@bcs-studio.com)'. The third row is labeled 'Permissions' and has a dropdown menu with the selected option 'Read'. Below these fields is a blue button labeled 'Generate API key'.

Enter a description - something like 'BatchlineKey' - this can be anything really

Choose a user who has full admin permissions over the site in the 'User' drop down

Change 'Read' to 'Read / Write' in the permissions drop down.

You should have something like this (but a different user)


Description	<input type="text" value="BatchlineExporter"/>
User	<input type="text" value="api-user (#2 – stuart@bcs-studio.com)"/>
Permissions	<input type="text" value="Read/Write"/>

[Generate API key](#)

Click the 'Generate API Key' button.
You should see something like this

Key details

API Key generated successfully. Make sure to copy your new keys now as the secret key will be hidden once you leave this page.

Consumer key	<input type="text" value="ck_4d07d5654526fd5098873977c400fc0cafb5d14f"/>	Copy
Consumer secret	<input type="text" value="cs_0edc1f7665910d446da021b4311d459080a8a734"/>	Copy
QRCode		

Next you need to add these to the exporter config.
Click 'settings' (button at the bottom right) of the exporter
This will bring up this screen

Sync Setup

Web Exporter Mode <input checked="" type="radio"/> Live Mode Stock changes will be queued even when this program isn't running. <input type="radio"/> Trial Mode Capture stock changes only when I run the data exporter	Configuration Save export files to C:\Users\jonpo\Documents\work\ Upload data to URL Browse Folder https://hillsidebooks.bcs-hosting.net/wp-json/wc/v3/bcsbertlinebookimport Download orders from URL Consumer Key Consumer Secret Save and Close
Options <input type="checkbox"/> Exclude titles that have only ever been customer orders <input type="checkbox"/> Get Orders in Sync Mode <input type="checkbox"/> Only Export Qty, RRP and Report during changes export <input type="checkbox"/> Exclude non book ISBNs from export (97x)	
Database Config Manage Include and Exclude ISBN Lists Create Shop Category Index for faster exports	

Click the 'copy' button next to the consumer key on the web site
Click the Consumer Key box in the exporter

Paste the key into the box that comes up and click 'Set'

Do the same with the consumer secret

Essentially a consumer key/secret combination is the username/password that authorises uploads of data to your website.

Upload data to URL

In 'Upload data to URL' you will need to enter an address specific for your website. In general this will be your website address plus **"/wp-json/wc/v3/bcsbertlinebookimport"**

So for the BCS demo site Hillside Books:

Their website URL is <https://hillsidebooks.bcs-hosting.net/>

Their upload URL therefore is

<https://hillsidebooks.bcs-hosting.net/wp-json/wc/v3/bcsbertlinebookimport>

Web Exporter Mode:

Always run the exporter in 'Live Mode' unless otherwise instructed by Batchline support staff

Options:

Exclude Titles that have only ever been customer orders

Tick this option if you would like the exporter to skip uploading titles that have only ever been customer orders and that have never been ordered for stock.

Get Orders In Sync Mode

Outside the scope of this guide

Only Export Qty, RRP and Report during changes export

Tick this option if you want to stop data uploads overwriting metadata edits made on your website. For example: If you edited a product on your website to change the format of the author name this would not be overwritten by subsequent data uploads. This only applies to 'changes' uploads and not full uploads, full uploads always contain full sets of data for all products.

Exclude non-book ISBNs from the export

Some users have non-book items in their database that they want to include in exports. Some shops would prefer to exclude anything non-book from their exported data.

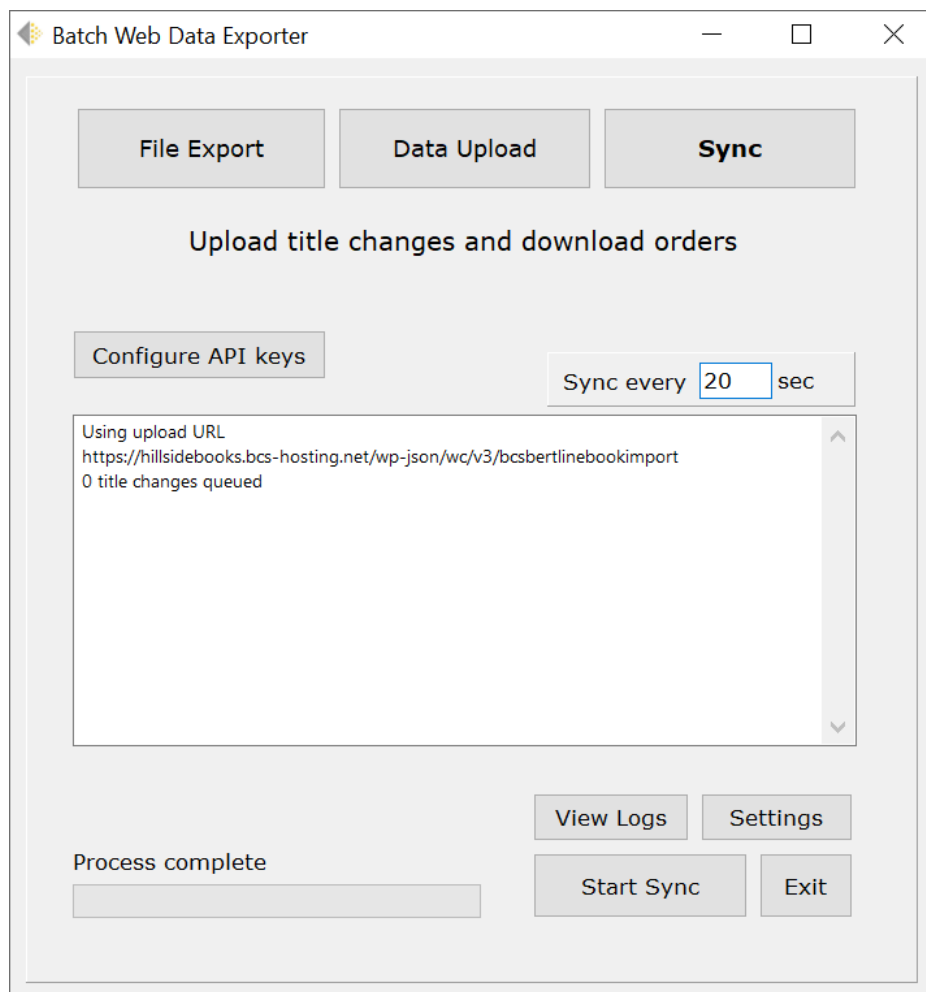
Running a Full Export:

- Select 'Data Upload' (button at the top)
- Select 'Full Export' from the 'Type' drop down
- Select 'WooCommerce XML' from the format drop down
- Select 'Category' from the filter drop down box.
- Click 'Configure Categories'
- A screen will appear with tiles showing your shop categories. A green tile means this category is included in exported data. A grey tile means it is not. Click on categories to change them from included to excluded or vice versa.
- Once you have selected the categories you wish to be included click 'Done'
- Click 'Upload Data'

This process could take a long time to complete as the exporter will need to fetch data from BDS for all the titles in the export (these are cached on your machine for faster exports in future). Once complete you should be able to see products on your website.

Running Sync:

Now that you've selected and uploaded your stock to your website you should run Sync to add new titles or upload changes to existing ones. Sync can be run all day every day and shouldn't need to be restarted.



- Click 'Sync' - button along the top
- Choose how often the exporter should check for changes and upload these to your website. Minimum is 20 sec. For most people 180 sec (once every three mins) should be ok and reduces load on your PC and your Batchline database.

The sync window will give you informational messages about what is happening including any errors that occur.

Common Issues:

A title isn't on my website and I think it should have been included.

-> Goto 'View Logs' and find this title either in 'Exported Data' 'Skipped Titles' or 'Failed Uploads' - this will help you to understand what's happening here.

How do I stop certain titles being uploaded to my website?

-> Goto 'settings' and click 'manage include and exclude lists' Add the title in question to the 'exclude' list (select exclude list - put the ISBN13 in the EAN field and click add)

How do I make a title outside of selected categories upload to my website?

-> Goto 'settings' and click 'manage include and exclude lists' add the title in question to the 'include' list (select include list - put the ISBN13 in the EAN field and click add)