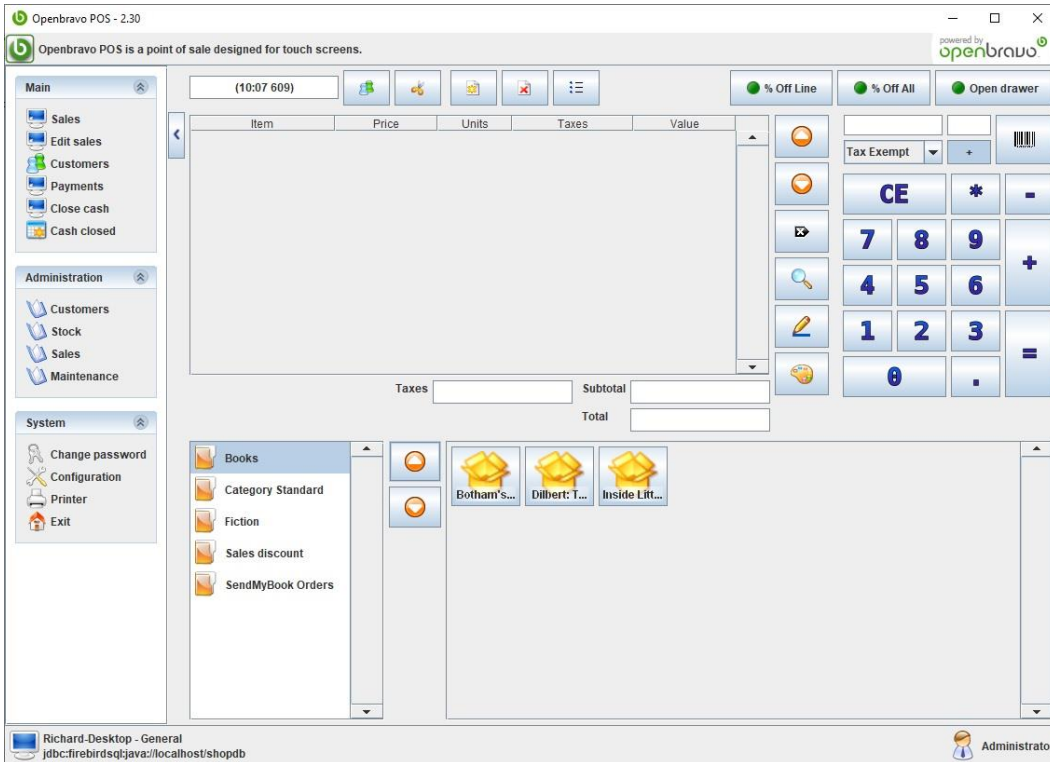
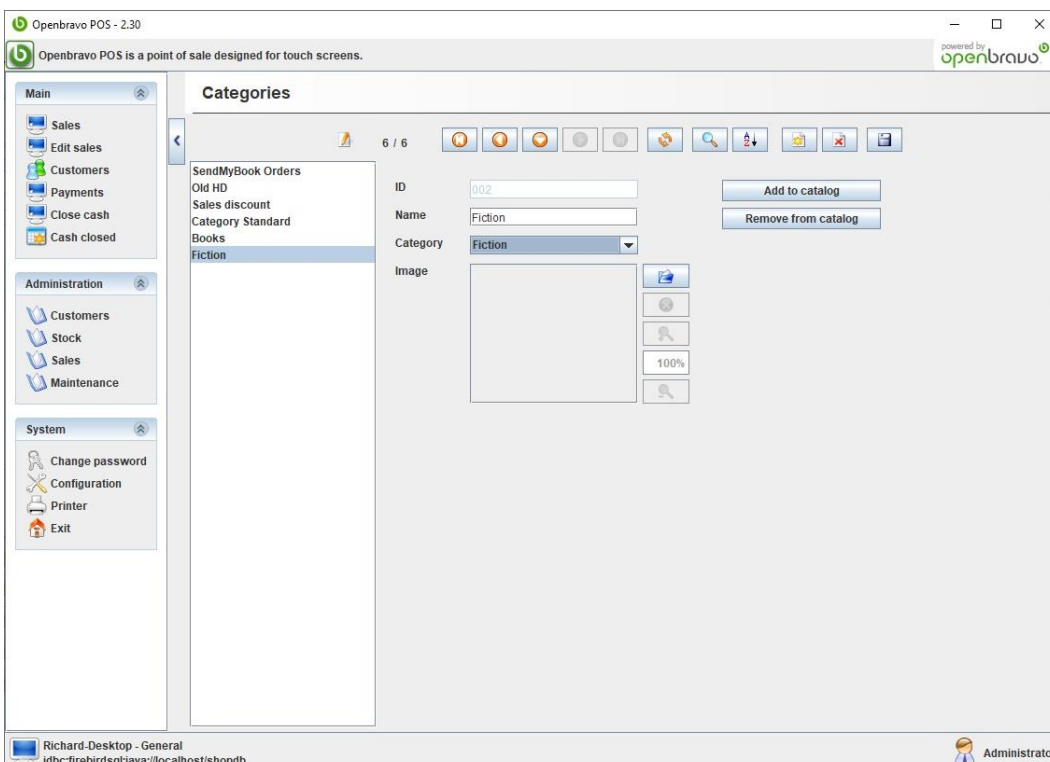


Category Buttons Missing in Open Bravo Sales Screen

At the bottom of the Sales screen on the left you will see categories that are not assigned a parent category. When you click on one then on the right you will see any child categories, plus any products set to display (see later for how to do this).

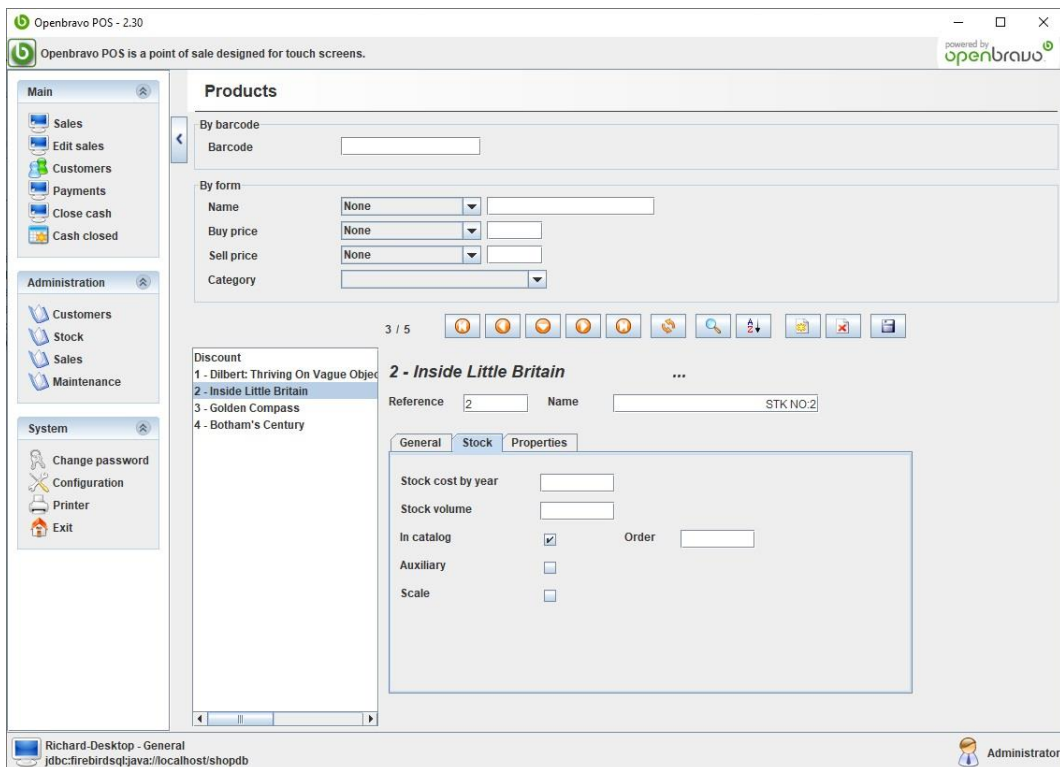


Be warned you can set a category as a child of itself, as shown below. This will stop it showing in the sales screen. To resolve assign the correct parent or clear the parent.



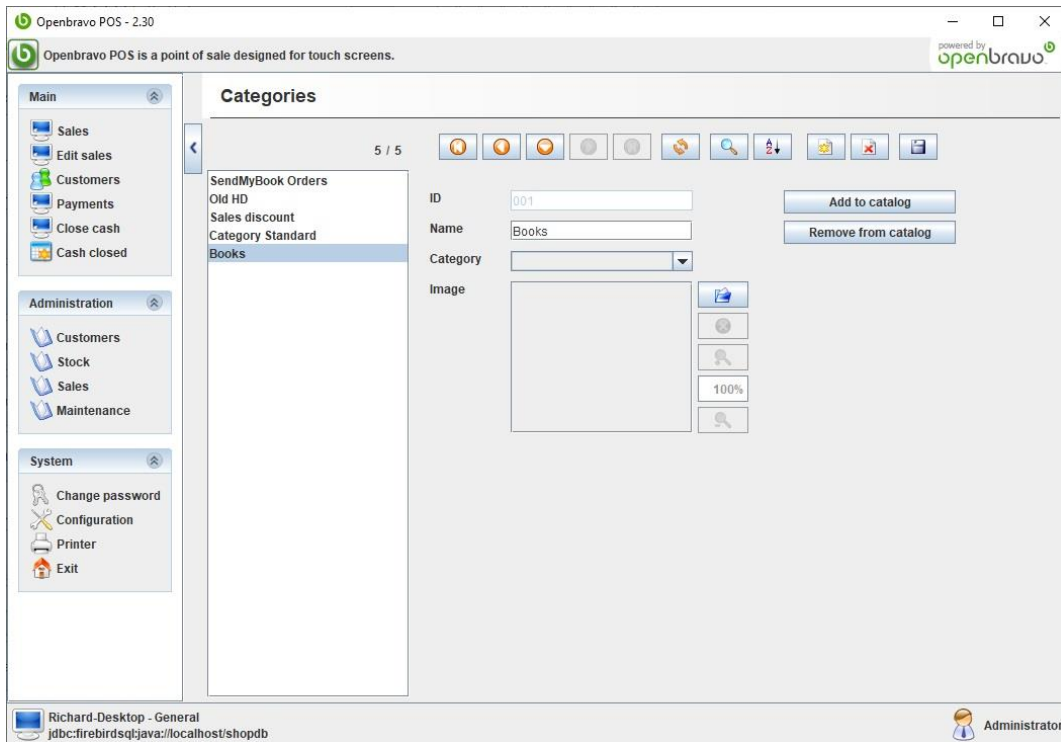
Choosing Which Products to Show on the Open Bravo Sales Screen

When you select a category in the Open Bravo sales screen it will show any products that are in that category that are set to show in catalog (American spelling). This can either be changed individually in the Stock > Products screen by checking/unchecking the "In catalog" option on the Stock tab for the given product.



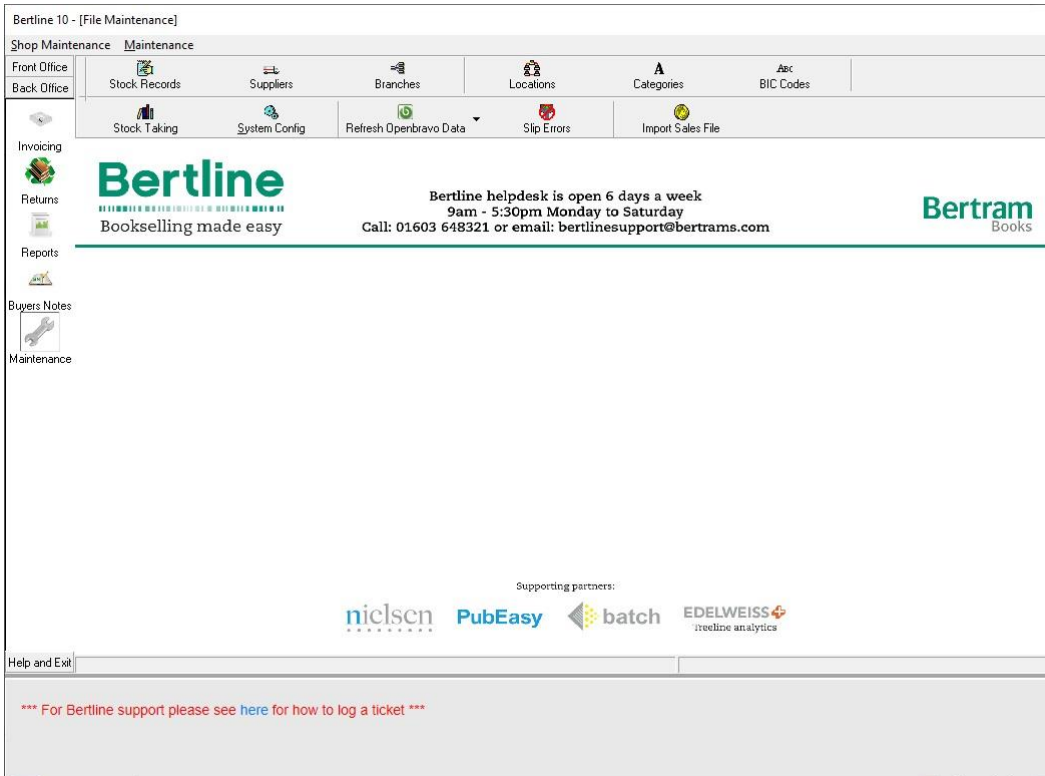
Or you can change it for all products in a given category through the Stock > Categories screen using the "Add to catalog" or "Remove from catalog".

This can be combined with setting some products individually. For example if you only have a few products that you want to display, but a lot currently display then rather than turning off lots of products individually you can turn off all products in the category and then just set on the individual products the ones you want to show.

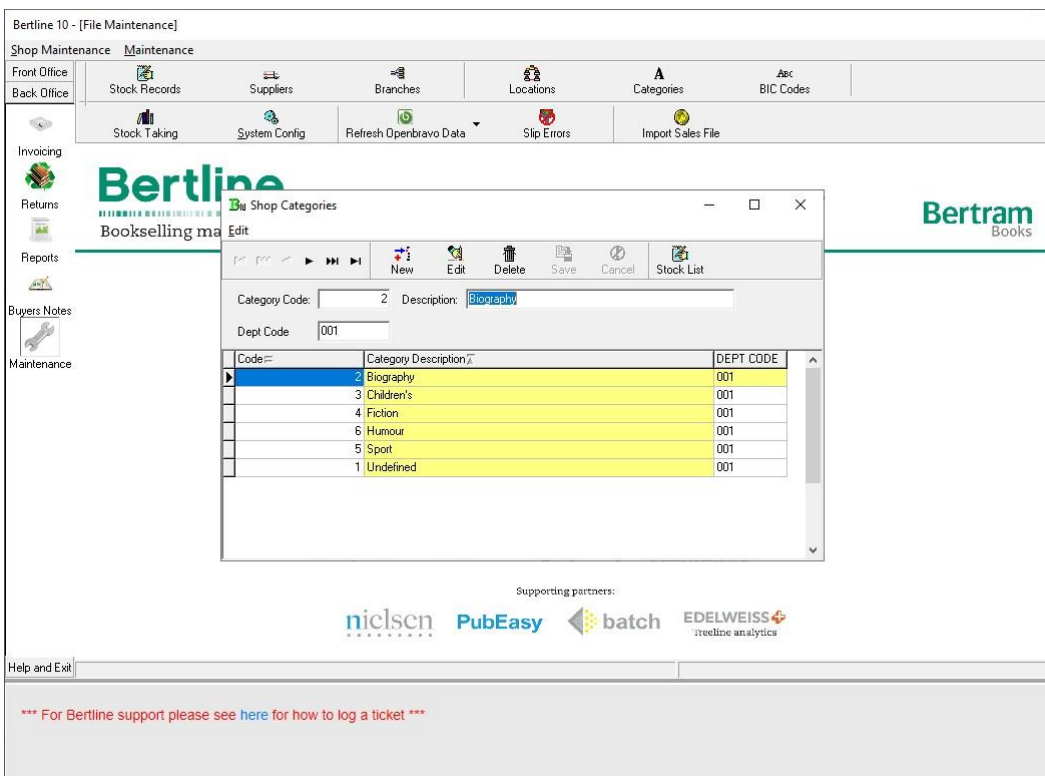


Relating Open Bravo and Bertline Categories

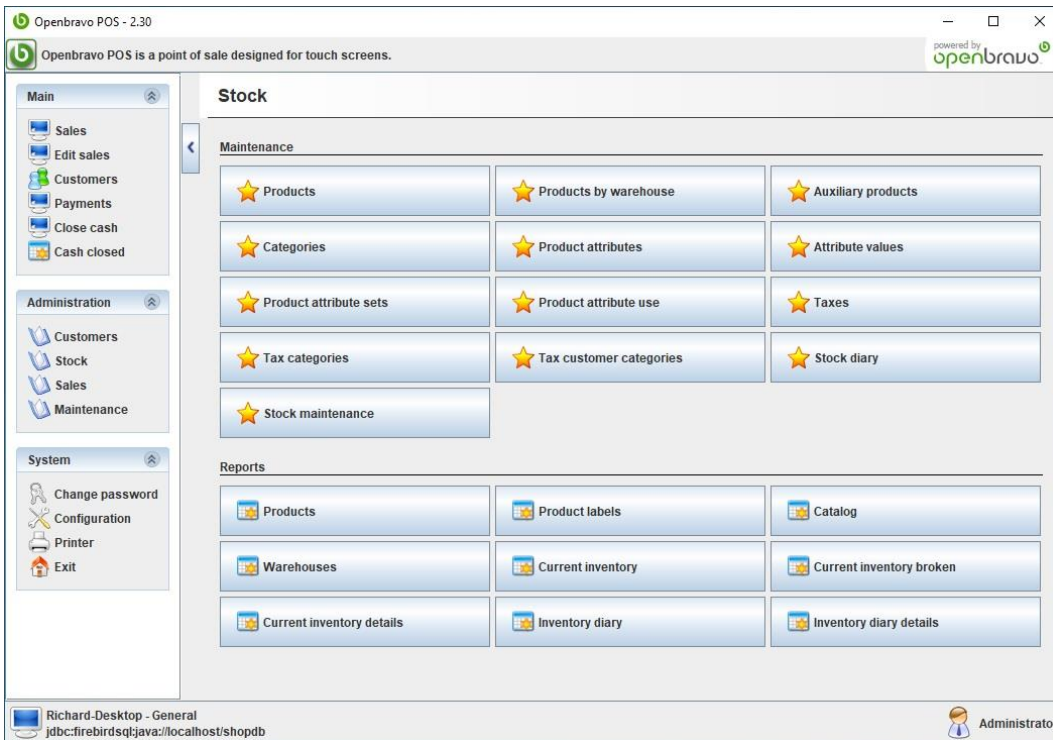
First check what departments you have assigned in Bertline. To do this go into Maintenance in Bertline which will show the below (buttons at the top may not have text labels depending on your configuration)



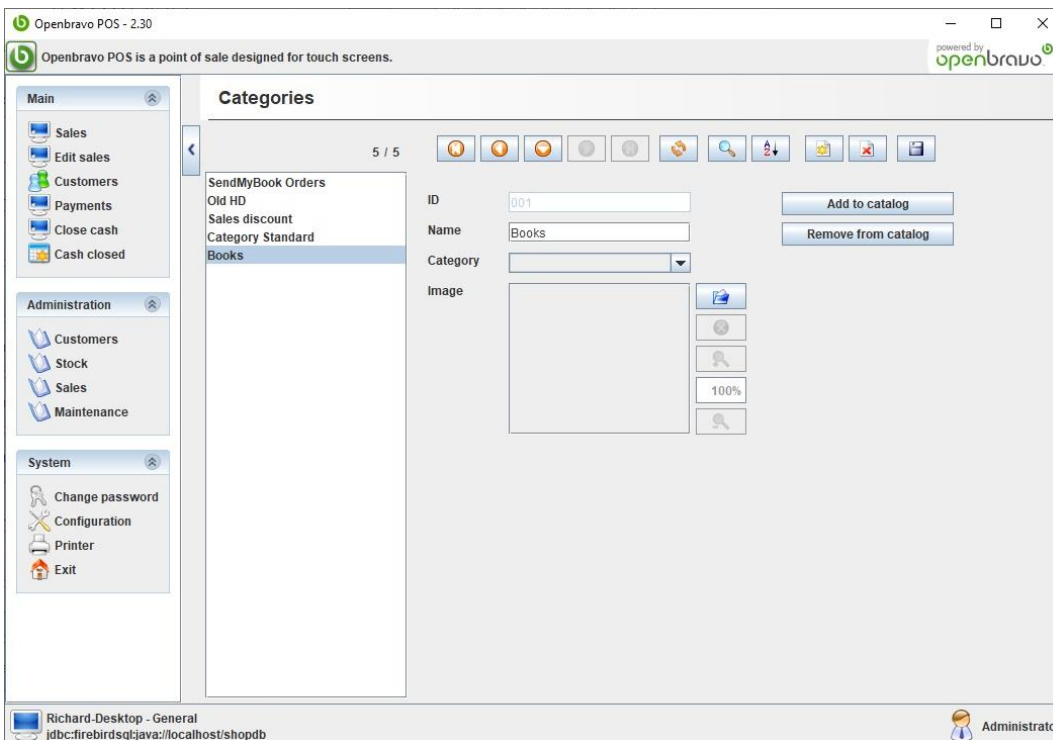
Click on Categories and check what values are already in use in the DEPT CODE column.



In Open Bravo select the Stock option which will display the below.

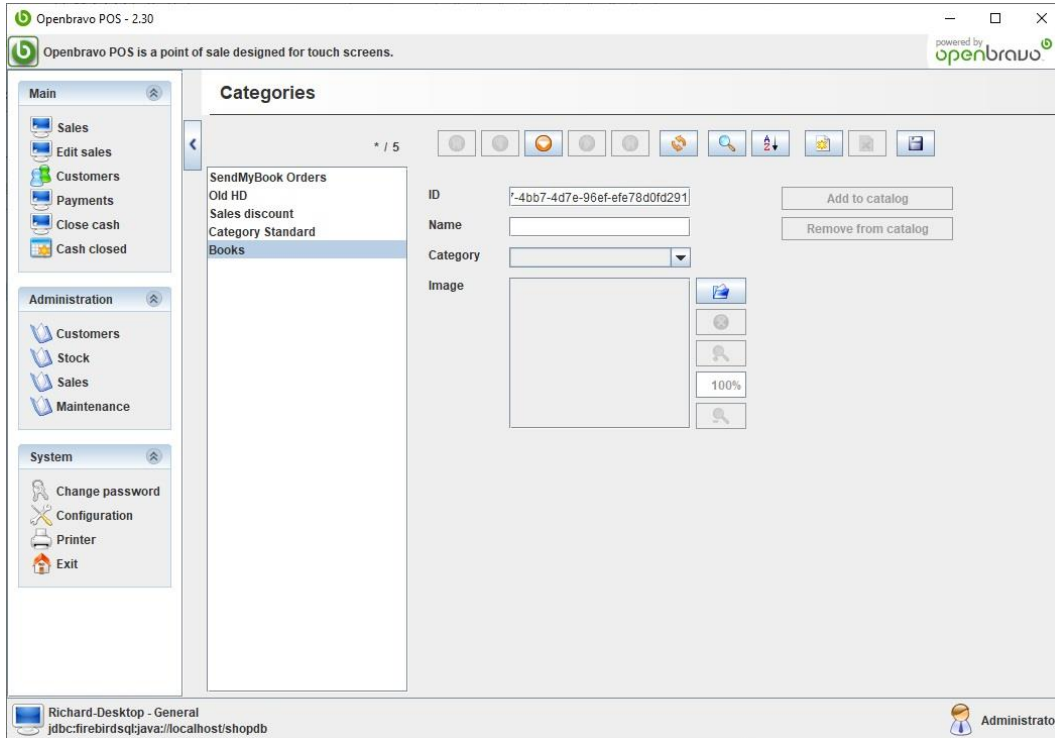


This will display the screen below. If you want to check which Bertline category/categories are associated with a given category the click on it and check the ID. Any Bertline category with this value in the DEPT CODE column will be in this Open Bravo category. For example in the case shown all Bertline categories go into Books (DEPT CODE 001).

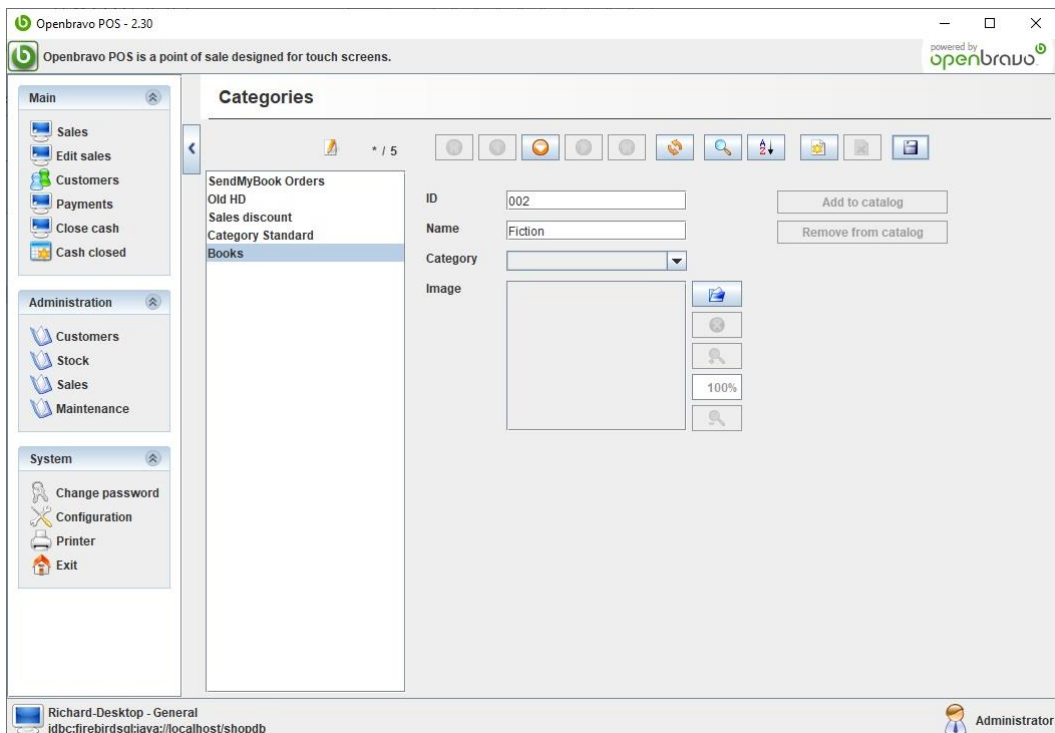


If you want to assign a Bertline category to a new category in Open Bravo then first check what IDs you have assigned to existing Open Bravo categories. You will need to use a value not already used. You only need to pay attention to IDs of 3 or less characters.

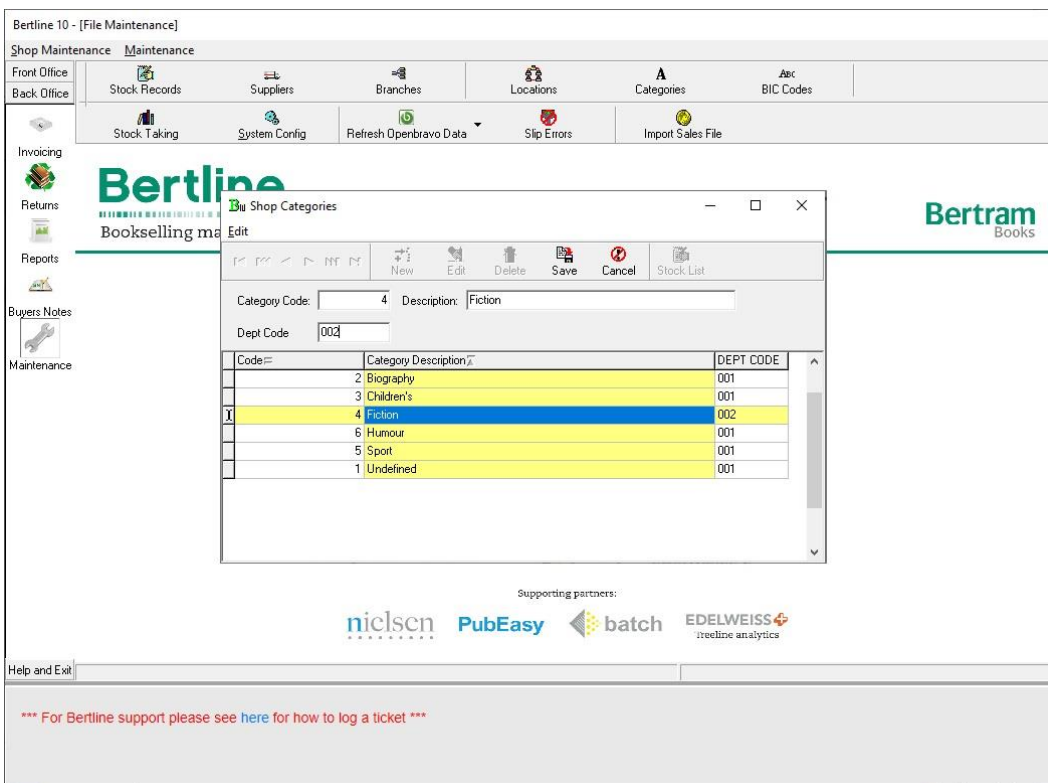
Create the category in Open Bravo using the yellow * on a page button.



Now delete what is in the ID field and replace it with an identifier up to 3 long that is not already in use and give a name to the category then save it (before saving you can pick an existing category in the drop to make it a child of that category).



No go back to Bertline and edit the category to assign the new ID as the DEPT CODE for any categories you want to be part of that category.



You will now need to run the Open Bravo product refresh so that products are reassigned to their new Open Bravo categories.

